



Phytochemical Profiling, Toxicological Studies and Effects of *Combretum racemosum* on Postpartum Lactating Female Albino Wistar Rats

Celestine N Ekweogu¹, Lawrence C Amanahu¹, Obinna S Nwabueze¹, Promise Nwankpa¹, Mercylyn E Uche¹, Eziuche A Ugbo^{2*}

¹Department of Medical Biochemistry, Imo State University, PMB 2000, Owerri, Imo State, Nigeria

²Department of Biochemistry Abia State University, PMB 2000, Uturu, Abia State, Nigeria

ARTICLE INFO

Article history:

Received 08 March 2025

Revised 18 April 2025

Accepted 05 May 2025

Published online 01 July 2025

ABSTRACT

Combretum racemosum leaves are used in ethnomedicine to treat haemorrhoids, toothache, to promote lactation and weight loss after childbirth. This study investigated the phytochemical composition and effects of ethanol leaf extract of *Combretum racemosum* (ELECR) on postpartum female rats to determine whether it promotes postpartum weight loss and increases milk production. Gas chromatography-mass spectrometry was used to analyse the phytochemical composition. Rats were divided into five groups: Group I (normal control: rats not treated with ELECR and not lactating), Group II (negative control: rats not treated with ELECR but lactating), while groups III-V received oral doses of ELECR at 400, 600 and 800 mg/kg body weight, respectively, once daily for 14 days. After ELECR treatment, rats were sacrificed on the 15th day after overnight fasting and blood collected by cardiac puncture for biochemical and hormonal analysis (oestrogen, progesterone, prolactin and follicle stimulating hormone). GC-MS analysis revealed bioactive compounds. The ELECR-treated groups significantly reduced ($p < 0.05$) body weight, alanine transaminase, aspartate transaminase, alkaline phosphatase, urea, creatinine, total cholesterol, triacylglycerol, low-density lipoprotein cholesterol, and malondialdehyde, while the levels of glutathione, catalase, superoxide dismutase, oestrogen, follicle stimulating hormone, red blood cell count, packed cell volume and haemoglobin increased significantly compared to the negative control ($p < 0.05$). This study revealed that ELECR is not toxic but increased hormone levels that promote lactation. It also showed that ELECR has hepatoprotective and lipid-lowering effects which justifies its use in folkore medicine as a tonic for postpartum weight loss with galactagogue effects.

Copyright: © 2025 Ekweogu *et al.* This is an open-access article distributed under the terms of the [Creative Commons Attribution License](https://creativecommons.org/licenses/by/4.0/), which permits unrestricted use, distribution, and reproduction in any medium, provided the original author and source are credited.

Keywords: Phytochemicals, Toxicity profile, postpartum weight loss, *Combretum racemosum*.

Introduction

All over the world, regardless of cultural background or ethnicity, the use of different parts of plants, be it leaves, roots, stem bark, fruits or flowers, to cure various health problems is gaining attention. According to researchers, this can be attributed to the availability of various bioactive compounds in these plant parts with potent pharmacological capabilities.¹⁻³ Most third world countries in Africa and Asia today rely on easily affordable and available medicinal plants to meet their health needs as modern medicine is expensive and mostly not readily available.⁴⁻⁶ Evidence-based research has shown that debilitating diseases such as stroke, cancer and obesity can be treated with medicinal plants and their bioactive phytoconstituents,^{7,8} resulting in more than 80% of the world's population relying on these plants to meet their health needs.^{9,10}

*Corresponding author. Email:

amadike.ugbo@abiastateuniversity.edu.ng

Tel.: +234-81-6755-0663

Citation: Ekweogu CN, Amanahu LC, Nwabueze OS, Nwankpa P, Uche ME, Ugbo EA. Phytochemical Profiling, Toxicological Studies and Effects of *Combretum Racemosum* on Postpartum Lactating Female Albino Wistar Rats. Trop. J. Nat. Prod. Res., 2025 9(6): 2864 - 2873 <https://doi.org/10.26538/tjnpr/v9i6.69>

Official Journal of Natural Product Research Group, Faculty of Pharmacy, University of Benin, Benin City, Nigeria

Conventional drugs for the daily treatment of asthma (ephedrine), artemisinin-based antimalarials for the treatment of Plasmodium infections and aspirin for the relief of pain and inflammation are all novel drugs synthesized from various plants.^{7,9,11} Currently, medicinal plants are used in the treatment of postpartum obesity which is elevated body mass index greater than 30 kg/m² following childbirth and to promote lactation because they are readily available, effective, cheap and have few side effects.⁹

Postpartum weight gain resulting from increased accumulation of steroids needed to maintain pregnancy, leads to low breast milk production and difficulties in initiating lactation and this remain a major challenge for new mothers who wish to exclusively breastfeed their newborn.¹² While postpartum obesity predisposes the young mother to cardiovascular diseases such as hypertension and myocardial infarction, diabetes mellitus and depression, comprehensive breastfeeding in the first six months of life is important for optimal growth and development of the child as well as for immune protection against various deadly childhood diseases, according to Kalantari *et al.*¹³ Breast milk is the primary source of essential nutrients for the child and therefore protects it from diseases that affect the child in early life, such as pneumonia, tetanus, gastroenteritis and sepsis,^{14,15} and reduces the risk of neonatal death. Previous studies have shown that women who exclusively breastfed their newborns have a lower risk of developing ovarian cancer and type II diabetes mellitus.¹⁶

The hormones: estrogen, prolactin and oxytocin play an essential role in the process of lactogenesis to produce breast milk.^{17,18} While estrogen is important for the growth and proliferation of breast tissue, prolactin regulates epithelial growth and the proliferation of mammary glands.¹⁸ Tactile stimulation of the nipple through suckling leads to the release of oxytocin from the hypothalamus and posterior pituitary,

which triggers contraction of the myoepithelial cells surrounding the ducts and alveoli, ultimately leading to milk let-down and ejection.^{17,19} Smoking, type II diabetes mellitus, obesity, retained products of conception such as the placenta and postpartum hemorrhage are among the various factors that can negatively affect lactation.^{20,21} Postpartum depression, mood swings, maternal attitudes towards breastfeeding and early introduction of artificial milk can alter neuroendocrine function by affecting prolactin and oxytocin levels, further inhibiting milk production.²² Also, anxiety neurosis is a crucial problem that occurs in the postnatal period and many mothers seek medication to treat their negative thoughts, anxiety and cosmetic obsessions about losing body shape.²³ Herbal galactagogues such as *Silybum marianum* and *Moringa oleifera*, which are rich in phytochemicals such as tannins and flavonoids, have been used to promote lactation in postpartum women.^{24,25} Previous studies have shown that *Combretum racemosum* leaves are used to treat urinary tract infections, trypanosomiasis and plasmodiasis.^{26,27} *Combretum racemosum* (*C. racemosum*), commonly called uboli in Southeast Nigeria, ebi-odo among the Urhobos and Christmas rose in pidgin English belongs to the Combretaceae family. It bears a bright and attractive bunch of crimson flowers known as the Christmas rose. Previous studies have shown that uboli is rich in bioactive compounds with varying pharmacological potential. The leaf has been used over the years as an ingredient in the preparation of local soups and porridge and in African ethnomedicine to cure various ailments such as tooth ache, inflammation and bacterial infection.²⁸ The leaves of *C. racemosum* are used in folklore medicine not only as a remedy for stomach ulcers and diarrhoea, but also as a soothing agent for haemorrhoids, toothache and male infertility.²⁸ In addition, recent studies have shown that several plants belonging to the medicinal family Combretaceae have anti-inflammatory, antibacterial and vasodilatory effects.^{6,29,30} However, little or no work has been done on the galactogenic and weight-reducing effects of *C. racemosum*. There is also paucity of data on how the leaf extract of *C. racemosum* modulates other postpartum biochemical parameters, such as hormonal balance, which may play some role in returning the new mother to her pre-pregnancy cosmetic state. Therefore, the aim of this study was to characterize *C. racemosum* phytochemically and to investigate its effect on lactation, weight loss and other selected biochemical parameters in female albino rats.

Materials and Methods

Collection of plant materials and identification

The leaves of *Combretum racemosum* were collected in Ahiara: Aguna Eze in Ahiazu Mbaize Local Government Area of Imo State, Nigeria (5.5385° N, 7.2437° E) on 18th August, 2024. The plant was identified by Dr. Udoka Emmanuel of the Department of Forestry, College of Natural Resources and Environmental Management, Michael Okpara University of Agriculture, Umudike, Abia State, Nigeria, and the herbarium number MOUAU/CVM/VPP/HERB/18/004 was assigned and the plant deposited in the herbarium at Michael Okpara University of Agriculture, Umudike.

Extraction of plant materials

The plant extract was prepared according to the method used by Orieko et al.³¹ Freshly collected leaves of *Combretum racemosum* were properly washed and air-dried in shade for about 14 days and then ground into coarse powder using a locally made grinding machine. Extraction was done by mixing 100 g of powdered material with 250 ml of 96% ethanol for 48 hours at 27°C (room temperature) with continuous shaking while the resultant mixture was filtered using Whatman Grade 1 Qualitative Filter Paper (150mm Circles 1001-150) and the filtrate was evaporated in a water bath at 40°C. The sample was stored in a refrigerator at 4 °C until use.

Gas chromatography-mass spectrometry (GC-MS) analysis of *Combretum racemosum* leaf extract

GC-MS analysis of the leaf extract was performed using a BUCK M910 gas chromatograph equipped with an HP-5MS section (30 m length × 250 µm width × 0.25 µm thickness of the film).

Spectroscopic identification by GC-MS included an electron ionization frame using high-energy electrons (70 eV). Unadulterated helium gas (99.99%) was used as the transport gas with a flow rate of 1 mL/min. The underlying temperature was set to 50 – 150 °C, with an expansion rate of 3 °C/min and a holding time of about 10 minutes. Finally, the temperature was increased to 300 °C at 10 °C/min. One microliter of the prepared 1% concentrates diluted with specific solvents was infused without spitting. The relative amount of compounds present in each of the concentrates was expressed as a function of the upper region generated in the chromatogram. Detection of the *C. racemosum* leaf extract constituents was performed by comparing the retention index of the mass spectral fragmentation patterns with those found in the National Institute Standard and Technology (NIST) database.⁷

Housing of animals

A total of sixty adult albino wistar rats (45 females and 15 males) were obtained from the Laboratory Animal Production Unit of the Department of Biochemistry, Abia State University, Uturu, for the study. The animals were housed in aluminum cages under standard conditions (12/12 hr light/dark cycle) at a temperature of 25±2°C. They were fed with standard grower pellets (Grand Cereals Ltd, Abia State) and had unrestricted access to clean drinking water for acclimatization for seven days before the experiment commenced. The studies were conducted in accordance with internationally recognised standards for the use of animals in research. Ethical approval was granted by the Abia State University Ethics Committee under approval number ABSU/REC/BMR/129.

Experimental design

The study was conducted in two phases. In the first phase, it was ensured that the animals became pregnant for the purposes of the experiment. For this purpose, the animals were divided into 15 groups of two female and one male rat each for a period of 28 days for breeding and gestation.³² Litters were delivered about 21 days following copulation and breastfeeding commenced. In the second phase of the experiment, 20 lactating female albino wistar rats and 5 normal female albino wistar rats were isolated and housed in different cages. The experiment was conducted with 20 lactating female rats and 5 non-lactating female rats, which were divided into 5 groups of 5 rats each and treated as follows: Group I (normal control: rats not treated with ELECR and not lactating), Group II (negative control: rats not treated with ELECR but lactating), while ELECR groups were treated as follows: III= 400, IV= 600 and V= 800 mg/kg body weight. The rats in all groups had free access to food and water *ad-libitum*. Oral administration of the extract to the rats lasted 14 days and was treated once daily. At the end, the rats were sacrificed by cervical dislocation and blood samples were collected in EDTA and normal bottles for hematologic and biochemical analyses, respectively.³³ The tissue samples of the liver, uterus and brain (pituitary gland and hypothalamus) of the animals were also collected in plain bottles containing 10% formalin and used to prepare tissue homogenates for histopathological studies.

Biochemical analysis

Liver, kidney and lipid profile (total cholesterol, high density lipoprotein, triacylglycerol, low density lipoprotein and very low density lipoprotein) parameters were determined using a spectrophotometer and Randox test kits (Randox Laboratories Limited, Antrim, UK). The haematological parameters (red blood cell count, packed cell volume, haemoglobin, white blood cell count, platelets, mean corpuscular volume, mean corpuscular haemoglobin, mean corpuscular haemoglobin concentration, neutrophils, lymphocytes, monocytes, eosinophils and basophils) were evaluated according to the methodology established by Bain et al.³⁴ For the assessment of antioxidant biomarkers (glutathione peroxidase, superoxide dismutase, catalase, reduced glutathione, malondialdehyde), the protocol described by Kanu et al.³⁵ was used. Hormone levels, including follicle stimulating hormone, progesterone, prolactin and estradiol, in the serum samples were quantified using chemiluminescence immunoassay (CLIA) techniques according to the

standard procedures of AUTOBIO diagnostics CO, LTD, Zhengzhou, China.

Histological analysis

Histopathological examination was performed according to the method described by Loha et al.³⁶ The tissues of liver, uterus, pituitary gland and hypothalamus were preserved in 10% formalin. The tissues were then cut into 5 µm slices, treated with paraffin wax and stained with hematoxylin-eosin dye. The stained sections were then examined under a light microscope by a qualified histopathologist.

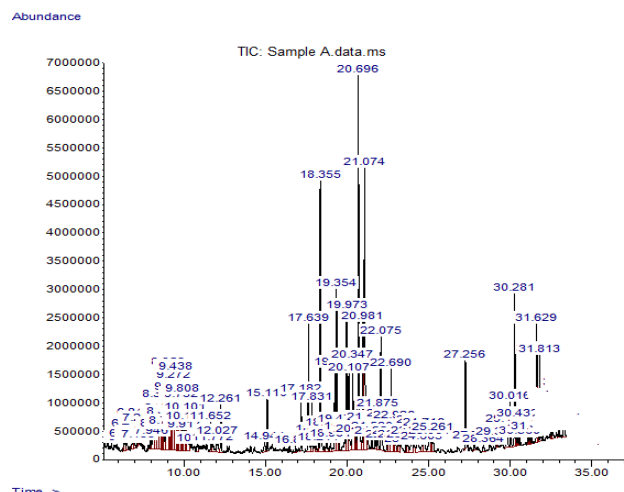
Statistical analysis

The data obtained from the study were analyzed using the Statistical Package for the Social Science (SPSS) version 22.0. Group comparisons were performed using the analysis of variance (ANOVA) test. Significant differences between the controls and the experimental groups were determined using the LSD (least significant difference) test. All data were expressed as mean ± standard deviation. P-values of less than 0.05 were considered statistically significant.

Results and Discussion

Gestation refers to the period from conception to the time of birth. The duration of gestation varies from animal to animal and during this time the female animal undergoes many physiological changes aimed at maintaining the pregnancy to ensure a positive outcome. The postpartum period remains a very critical phase in the life of the mother and the newborn, as most infant and maternal deaths occur during this time, especially in developing countries.²⁸ Excessive weight gain, likely due to the increased steroid hormones needed to maintain pregnancy, and the accumulation of fat due to lack of exercise and sedentary lifestyle caused by pregnancy, as well as difficulties in initiating and maintaining lactation, are among the greatest challenges women face after the birth of their children. In traditional medicine, plants are being researched that have the potential to help postpartum women with weight loss, initiation of lactation, and regeneration of blood lost during childbirth.^{12,37} Currently, the use of various plant parts such as leaves, roots, stem bark and fruits as postpartum medicine is well established and practiced in Africa due to their cultural acceptability, compatibility

with human physiology and limited side effects. In addition, the phytochemicals contained in these herbs are currently used as major ingredients for the synthesis of new drugs.^{8,10,38} The aim of this study was to characterize *C. racemosum* phytochemically and investigate its effects on selected biochemical parameters in lactating albino rats. Gas chromatography-mass spectrometry (GC-MS) analysis is a widely accepted method for the identification and quantification of various phytoconstituents in a plant complex mixture or other biological matrices.^{10,39} GC-MS analysis revealed fifty-three chemical compounds of which fourteen are bioactive compounds including δ-terpinene, apiol, guaiol, humulene, δ-terpinene, α-copaene, linadool, therpinen-4-ol, azulene, dodecane, β-famesene, β-bisabolene, caryophyllene oxide and hexadecanoic acid ethyl ester (Table 1, Figure 1). Previous studies reported the antioxidant and antimicrobial properties of gamma-terpinene, azulene and dodecane.⁴⁰⁻⁴²



17	9.44	Linalool	C ₁₀ H ₁₈ O	154.25	1.75
18	9.69	Octane, 2,3,3-trimethyl-	C ₁₁ H ₂₄	156.31	0.78
19	9.81	Nonane, 3-methyl-	C ₁₀ H ₂₂	142.28	1.32
20	9.92	Undecane	C ₁₁ H ₂₄	156.31	0.32
21	10.03	2,6-Dimethyldecane	C ₁₂ H ₂₆	170.33	0.77
22	10.85	Hydroxylamine, O-decyl-	C ₁₀ H ₂₃ NO	173.29	0.25
23	11.65	Terpinen-4-ol	C ₁₀ H ₁₈ O	154.25	0.44
24	11.77	Azulene	C ₁₀ H ₈	128.17	0.30
25	12.02	5-Dodecene, (Z)-	C ₁₂ H ₂₄	168.32	0.40
26	14.94	Benzocycloheptatriene	C ₁₁ H ₁₀	142.19	0.26
28	16.85	Heptane, 2,6-dimethyl-	C ₉ H ₂₀	128.25	0.12
29	17.18	Alpha copaene	C ₁₅ H ₂₄	204.36	0.87
30	17.64	1,3-Pentadiene, (Z)-	C ₅ H ₈	68.11	2.29
31	18.08	1H-Cycloprop[e]azulene, 1a,2,3,4,4 a,5,6,7b-octahydro-1,1,4,7-tetramethyl-, [1aR-(1a.alpha.,4.alpha.,4a .beta.,7b.alpha.)]-	C ₁₅ H ₂₄	204.35	0.29
32	18.74	Santolina triene	C ₁₀ H ₁₆	136.23	0.43
33	19.25	Humulene	C ₁₅ H ₂₄	204.35	1.23
34	19.36	(E)-.beta.-Farnesene	C ₁₅ H ₂₄	204.35	2.75
35	19.87	1-(3,3-Dimethylbutyn-1-yl)-2,2-dimethylcyclopropene	C ₁₁ H ₁₆	148.24	0.50
36	20.34	(E,Z)-.alpha.-Farnesene	C ₁₅ H ₂₄	204.35	2.22
37	20.48	.alpha.-Murolene	C ₁₅ H ₂₄	204.35	0.26
38	20.69	.beta.-Bisabolene	C ₁₅ H ₂₄	204.35	6.94
39	20.98	2,4-Di-tert-butylphenol	C ₁₄ H ₂₂ O	206.32	2.67
40	21.07	Cyclohexene, 3-(1,5-dimethyl-4-hexenyl)-6-methylene-, [S-(R*,S*)]-	C ₁₅ H ₂₄	204.35	5.55
41	22.53	Caryophyllene oxide	C ₁₅ H ₂₄ O	220.35	0.44
42	22.85	10-Methylnonadecane	C ₂₀ H ₄₂	282.55	0.22
43	22.92	Guaiol	C ₁₅ H ₂₆ O	222.37	0.71
44	23.59	Apiol	C ₁₅ H ₂₆ O	222.37	0.13
45	24.29	Aromandendrene	C ₁₅ H ₂₄	204.35	1.04
46	27.25	1-Octadecene	C ₁₈ H ₃₆	252.48	1.43
47	30.01	Di-sec-butyl phthalate	C ₁₆ H ₂₂ O ₄	278.34	0.59
48	30.28	Hexadecanoic acid, ethyl ester	C ₁₈ H ₃₆ O ₂	284.47	2.46
49	30.35	5-Eicosene, (E)-	C ₂₀ H ₄₀	280.53	0.09
50	30.56	Acetoxyacetic acid, tridec-2-ynyl ester	C ₁₇ H ₂₈ O ₄	296.40	0.11
51	31.30	1-Methylcycloheptanol	C ₈ H ₁₆ O	128.21	0.16
52	31.62	Linoleic acid ethyl ester	C ₂₀ H ₃₆ O ₂	308.49	0.95
53	31.66	9-Octadecenoic acid, ethyl ester	C ₂₀ H ₃₈ O ₂	310.51	0.88

RT, Retention Time, MW; Molecular Weight

Also a previous study reported that the bioactive compound beta-bisabolene exhibits anticancer and antitumour effects as well as synergistic antimicrobial activity against certain bacteria⁴³, while hexadecanoic acid ethyl ester has hypocholesterolemic, nematocidal, pesticidal, and antioxidant effects.⁴⁴ Prolonged and repeated administration of a xenobiotic over a period of 14 to 90 days may result in some adverse effects, generally classified as subacute toxicity.⁴⁵ Subacute toxicity studies serve as a guideline

for the number of days over which a substance should not be used in order not to cause toxicity. They provide an estimate of the safety margin of exogenous chemical compounds. All animals in this study gained weight after birth, regardless of the dose administered, indicating that ELECR is not toxic. However, after parturition, animals treated with 400, 600 and 800 mg/kg doses showed a significant ($p < 0.05$) decrease in weight gain compared to animals in groups I and II that did not receive ELECR (Table 2). These results provide scientific evidence that *C. racemosum* tonic when taken by

mothers after childbirth helps to lose the weight gained during pregnancy. Blood is the primary transport medium for toxic substances and any adverse effect on blood parameters serves as an indicator of a person's health status.⁴⁶ Blood disorders that manifest when toxins are ingested include thrombocytopenia, leukopenia, lymphocytosis, bone marrow depression, infections and all forms of anaemia.^{8,10,47} Assessment of haematological parameters is also a viable tool for monitoring a patient's treatment and recovery.

Administration of ELECR at a dose of 400, 600 and 800 mg/kg improved the erythropoietic process by significantly increasing ($p<0.05$) the levels of red blood cell, packed cell volume and haemoglobin when compared with the group II animals which were lactating (postpartum) but did not receive ELECR (Table 3).

Table 2: Effects of *Combretum racemosum* ethanol leaf extract on body weight changes of lactating female albino wistar rats

Groups	Treatments	Initial body weight (g)	Final body weight (g)	Weight gain (g)	Percentage weight gain
I	Normal control	130.00±5.77	160.00±2.89	30.00±2.89 ^c	23.37±3.27 ^b
II	Lactating rats (negative control)	150.67±6.36	184.33±5.81	33.67±0.67 ^c	22.46±1.36 ^b
III	Lactating rats + 400 mg/kg ELECR	149.33±5.81	167.67±5.36	18.33±0.88 ^b	12.34±0.98 ^a
IV	Lactating rats + 600 mg/kg ELECR	149.67±6.12	160.33±2.91	10.67±3.38 ^a	7.32±2.48 ^a
V	Lactating rats + 800 mg/kg ELECR	150.67±7.86	157.00±6.56	6.33±1.45 ^a	4.32±1.17 ^a

Values are Mean ± standard deviation, n=5, mean across the column with different alphabetical superscript indicates a significant different ($P<0.05$). ELECR: *Combretum racemosum* ethanol leaf extract

Table 3: Effects of *Combretum racemosum* ethanol leaf extract on haematological parameters of lactating female albino wistar rats

Treatments	Normal control	Lactating rats (negative control)	Lactating rats + 400 mg/kg ELECR	Lactating rats + 600 mg/kg ELECR	Lactating rats + 800 mg/kg ELECR
RBC (x10 ⁶ /mm ³)	7.49±0.11 ^d	5.06±0.04 ^a	6.70±0.20 ^c	6.26±0.17 ^{bc}	6.22±0.16 ^c
PCV (%)	42.37±1.32 ^b	33.27±0.64 ^a	39.73±2.13 ^b	39.50±0.44 ^b	37.90±1.47 ^b
Hb (g/dl)	15.27±0.57 ^b	12.40±0.06 ^a	14.93±0.55 ^b	14.60±0.31 ^b	14.17±0.63 ^b
WBC (x10 ³ /mm ³)	9.99±0.23 ^a	14.73±1.31 ^b	11.71±0.74 ^{ab}	12.73±1.05 ^{ab}	14.62±0.79 ^b
PLT (x10 ³ /mm ³)	490.33±2.33 ^{ab}	518.33±5.61 ^b	474.00±2.65 ^a	461.67±6.69 ^a	570.00±23.03 ^c
MCV (fl)	56.61±2.60 ^a	65.74±1.03 ^c	59.19±1.39 ^{ab}	63.16±1.27 ^{bc}	60.90±1.00 ^{abc}
MCH (pg)	20.40±1.06 ^a	24.51±0.10 ^c	22.27±0.21 ^{ab}	23.35±0.63 ^{bc}	22.76±0.60 ^{bc}
MCHC (g/dl)	36.02±0.21 ^a	37.30±0.73 ^a	37.65±0.72 ^a	36.95±0.44 ^a	37.37±0.45 ^a
Neutrophils (%)	40.67±0.67 ^b	35.67±0.67 ^a	40.00±0.58 ^b	40.33±0.88 ^b	41.33±0.67 ^b
Lymphocytes (%)	54.33±1.20 ^a	58.33±0.67 ^b	54.33±0.33 ^a	55.00±1.15 ^a	54.33±0.88 ^a
Monocytes (%)	2.67±0.33 ^a	3.33±0.33 ^a	3.00±0.00 ^a	2.33±0.33 ^a	2.33±0.33 ^a
Eosinophils (%)	2.33±0.33 ^a	2.67±0.33 ^a	2.67±0.33 ^a	2.33±0.33 ^a	2.00±0.00 ^a
Basophils (%)	0.00±0.00 ^a	0.00±0.00 ^a	0.00±0.00 ^a	0.00±0.00 ^a	0.00±0.00 ^a

Values are Mean ± standard deviation, n=5; mean across the row with different alphabetical superscript indicates a significant different ($P<0.05$). RBC, Red Blood Cells; PCV, Packed Cell Volume; HB, Haemoglobin; MCV, Mean Corpuscular Volume; MCH, Mean Corpuscular Haemoglobin; MCHC, Mean Corpuscular Haemoglobin Concentration; WBC, White Blood Cell. Normal control represents group I, negative control represents group II while 400, 600 and 800 mg/kg ELECR represent Groups III, IV and V respectively.

This does not only corroborate the non-toxicity of the extract but lends credence to the use of ELECR in restoring the haemoglobin of individuals following blood loss and the anaemic state that frequently accompanies childbirth. Non-significant changes ($p>0.05$) in white blood cells (WBC) differentials, including basophils, eosinophils and monocytes (Table 3) was noted, implying that the extract did not adversely affect the process of leukopenia. Miaffo et al.³⁷ reported comparable results, indicating that the administration of the aqueous extract of *Combretum molle* led to a significant increase in the levels of RBC, HB, and PCV, whereas the changes in the values of WBC differentials were not significant.

The lipid profile is a diagnostic tool to detect abnormalities that can be attributed to a disturbed lipid metabolism. Dyslipidemia and its associated health problems such as diabetes mellitus, cancer, atherosclerosis, hypertension and pulmonary embolism are detected by determining the lipid profile.³³ In addition, postpartum obesity

predisposes the new mother to cerebrovascular disease, myocardial infarction, stroke, lethargy and decreased self-esteem.⁴⁸ The animals in groups III, IV and V (Lactating animals administered different doses of ELECR) showed a reduction $p<0.05$ in total cholesterol, triacylglycerol, low density lipoprotein cholesterol and very low density lipoprotein cholesterol levels compared to the animals in group II, which served as a negative control (Table 4). The values for HDL-C in the normal control animals are also comparable with the values of the animals treated with the ELECR (Table 4). The result of the lipid profile in this experiment confirms the previously reported data that animals receiving our extract showed a lower percentage weight gain compared to the control rats. The hypolipidemic effect of this extract could be due to the presence of hexadecanoic acid ethyl ester.⁴⁴ Miaffo et al.³⁷ also reported similar anti-hyperlipidemic and cardioprotective effects of *Combretum molle*.

The liver is the most important organ for the biotransformation and detoxification of drugs and plays the most important role in the

metabolism of macromolecules in the body. Liver pathologies such as alcoholic and non-alcoholic fatty liver disease, viral hepatitis, acetaminophen-induced hepatotoxicity, hepatitis and cirrhosis lead to hepatocyte damage and the associated leakage and increase in liver biomarkers such as alanine transaminase, aspartate transaminase, alkaline phosphatase, liver proteins and bilirubin.⁴⁹ These biomarkers are well-established indicators of liver disease. Treatment of the experimental animals with extract doses of 400, 600 and 800 mg/kg resulted in a significant ($p < 0.05$) reduction in liver enzymes: ALT, AST and ALP as well as total bilirubin when the treated groups were compared to lactating animals that did not receive the extract. However, groups III, IV and V showed a significant increase ($p < 0.05$) in total protein content, albumin and globulin when compared to the negative control (Table 5). These results are similar to those of the normal control animals that did not give birth, both in terms of biomarker values and histological findings. The histology of the group I animals (normal control) is not different from that of the ELECR-treated animals (Figure 2), indicating that ELECR is not toxic. Okwuosa et al.⁵⁰ reported a significant decrease in AST, ALT and ALP levels when animals that had cyclophosphamide-induced liver

injury were treated daily with crude methanol leaf extract of *C. racemosum* for 14 days. Serum electrolytes, urea and creatinine levels remain the most important indicator of renal status.^{51,52} Elevated urea, creatinine and potassium levels are indicative of kidney damage and renal dysfunction.⁹ Our results show a statistically significant decrease ($P < 0.05$) in urea and creatinine concentrations in animals treated with different doses of the ELECR compared to the negative control animals (Figure 3). This indicates that the ELECR is not toxic but rather reno-protective.

One of the body's defence mechanisms against free radical damage and oxidative stress caused by elevated levels of reactive oxygen species (ROS) is the production of various substances known as antioxidants.^{6,53,54} Cellular damage caused by ROS leads to pathological conditions. A number of exogenous substances used in the treatment of oxidative stress and complications are cytotoxic, prompting the reliance on herbal products to scavenge free radicals.^{6,55,56} Administration of ELECR significantly increased ($P < 0.05$) the levels of glutathione peroxidase, superoxide dismutase, catalase and reduced glutathione in the treated animals compared to the negative control group.

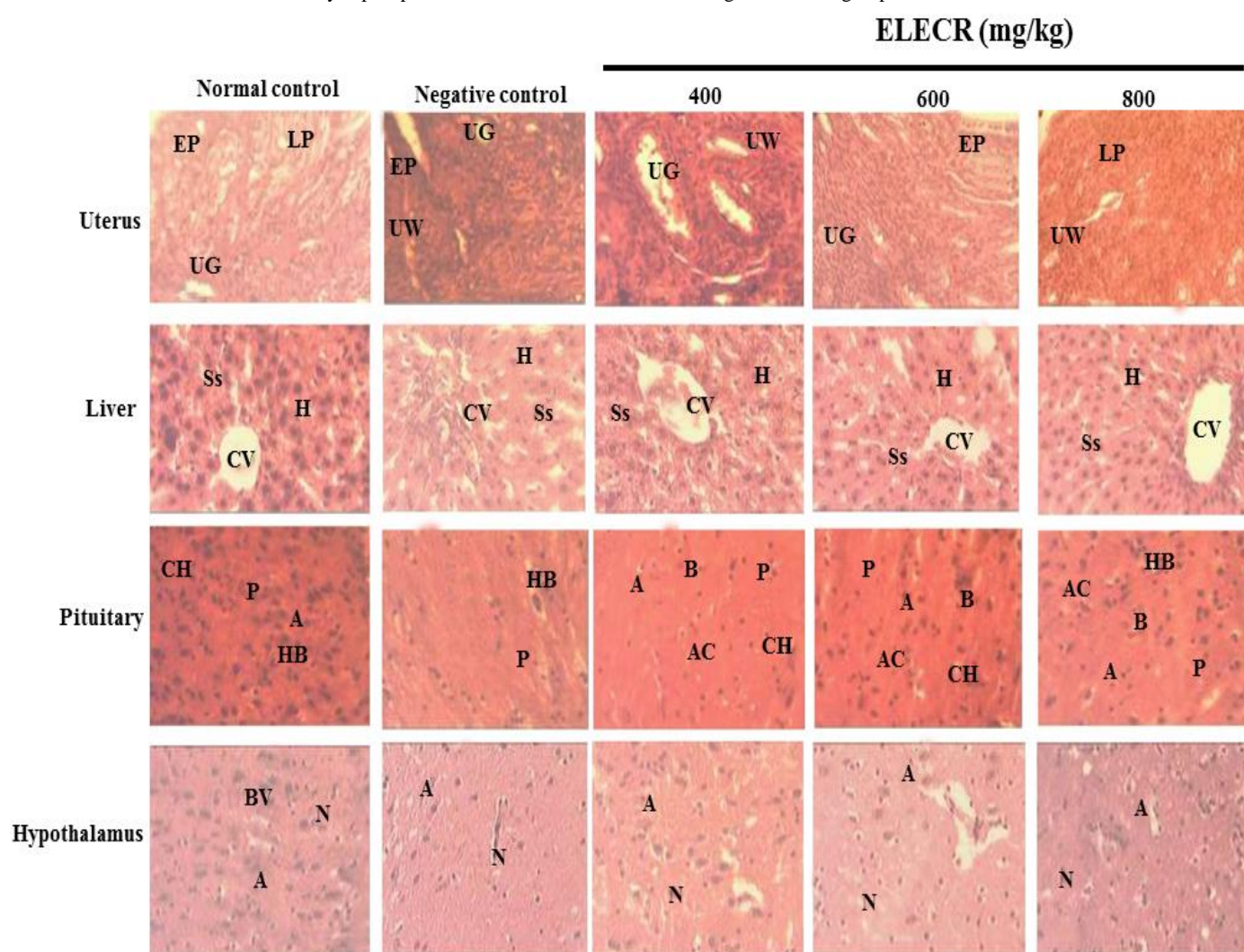


Figure 2: Histology of the uterus, liver, pituitary and hypothalamus of *Combretum racemosum* ethanol leaf extract-treated lactating female albino wistar rats.

Haematoxylin and eosin staining (H&E), magnification $\times 100$.

In uterus, LP= Lamina propra, UG= uterine gland and UW= Uterine wall. In liver, CV= central vein, SS= sinusoids and H= hepatocytes. In Pituitary, AC= acidophil, B= basophils, P= pituicytes, CH= chromophores, HB= herring bodies, A= axon. In hypothalamus, N=

neurons, A= axon and BV= blood vessel. Normal control represents group I, negative control represents group II while 400, 600 and 800 mg/kg ELECR represent Groups III, IV and V respectively

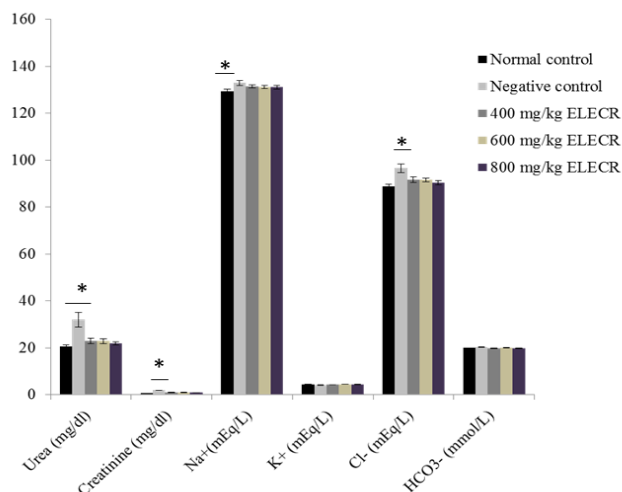


Figure 3: Effects of *Combretum racemosum* ethanol leaf extract on renal function parameters of lactating female albino wistar rats

Values are Mean \pm standard deviation, n=5. * indicates a significant different (P<0.05). Cl⁻, Chloride ion; Na⁺, Sodium ion; K⁺, Potassium ion; HCO₃⁻, Bicarbonate. Normal control represents group I, negative control represents group II while 400, 600 and 800 mg/kg ELECR represent Groups III, IV and V respectively.

However, malondialdehyde levels decreased significantly (P< 0.05) when the ELECR-treated animals were compared with the negative control group (Figure 4). The reduction in MDA levels and increase in GSH, CAT and SOD found in our study have been shown to protect against free radicals and oxidative stress.⁵⁷ The presence of bioactive compounds such as azulene, dodecane and gamma-terpinene with strong antioxidant capabilities could be responsible for the protection against oxidative stress observed in this extract.^{40,41,42} Previous studies on the different *Combretum* species (*Combretum molle*, *Combretum indicum*, *Combretum albidum*) have also shown their antioxidant properties.⁵⁸⁻⁶¹

Table 4: Effects of *Combretum racemosum* ethanol leaf extract on lipid profile parameters of lactating female albino wistar rats

Treatments	Total cholesterol (mg/dl)	HDL-C (mg/dl)	TAG (mg/dl)	LDL-C (mg/dl)	VLDL-C (mg/dl)
Normal Control	92.45 \pm 1.17 ^b	61.95 \pm 0.84 ^b	74.01 \pm 3.27 ^a	15.70 \pm 0.59 ^b	14.80 \pm 0.65 ^a
Lactating rats (negative control)	114.66 \pm 1.11 ^c	60.89 \pm 0.21 ^{ab}	84.31 \pm 1.90 ^b	36.91 \pm 1.27 ^c	16.86 \pm 0.38 ^b
Lactating rats + 400 mg/kg ELECR	91.20 \pm 1.09 ^b	61.61 \pm 0.75 ^{ab}	78.44 \pm 1.11 ^{ab}	13.90 \pm 1.64 ^b	15.69 \pm 0.22 ^{ab}
Lactating rats + 600 mg/kg ELECR	80.78 \pm 0.38 ^a	59.99 \pm 0.56 ^{ab}	78.53 \pm 3.83 ^{ab}	5.08 \pm 0.19 ^a	15.71 \pm 0.77 ^{ab}
Lactating rats + 800 mg/kg ELECR	83.88 \pm 2.20 ^a	59.69 \pm 0.51 ^a	77.63 \pm 1.53 ^{ab}	8.67 \pm 1.57 ^a	15.53 \pm 0.31 ^{ab}

Values are Mean \pm standard deviation, n=5, mean across the column with different alphabetical superscript indicates a significant different (P<0.05). TC, Total Cholesterol; HDL-C, High-Density Lipoprotein Cholesterol; Triacylglycerol, LDL-C, Low-Density Lipoprotein Cholesterol; VLDL-C, Very Low-Density Lipoprotein Cholesterol. Normal control represents group I, negative control represents group II while 400, 600 and 800 mg/kg ELECR represent Groups III, IV and V respectively.

Table 5: Effects of *Combretum racemosum* ethanol leaf extract on liver function parameters of lactating female albino wistar rats

Treatments	Normal control	Lactating rats (negative Control)	Lactating rats + 400 mg/kg ELECR	Lactating rats + 600 mg/kg ELECR	Lactating rats + 800 mg/kg ELECR
Total protein (g/dl)	8.29 \pm 0.10 ^b	4.65 \pm 0.27 ^a	8.06 \pm 0.14 ^b	7.92 \pm 0.03 ^b	8.07 \pm 0.08 ^b
Albumin (g/dl)	4.84 \pm 0.16 ^c	2.22 \pm 0.12 ^a	4.27 \pm 0.14 ^b	4.24 \pm 0.05 ^b	4.16 \pm 0.04 ^b
Globulin (g/dl)	3.45 \pm 0.11 ^b	2.43 \pm 0.17 ^a	3.78 \pm 0.06 ^c	3.68 \pm 0.02 ^{bc}	3.91 \pm 0.04 ^c
AST (u/l)	41.67 \pm 1.67 ^a	93.00 \pm 1.73 ^c	60.33 \pm 1.45 ^b	59.33 \pm 3.18 ^b	57.33 \pm 3.71 ^b
ALT (u/l)	32.67 \pm 1.76 ^a	53.33 \pm 1.45 ^c	39.67 \pm 1.45 ^b	44.33 \pm 1.76 ^b	40.33 \pm 0.88 ^b
ALP (u/l)	70.67 \pm 1.20 ^a	115.67 \pm 2.19 ^c	78.67 \pm 3.53 ^{ab}	77.00 \pm 1.00 ^{ab}	80.67 \pm 3.84 ^b
Total Bilirubin (mg/dl)	0.45 \pm 0.03 ^a	1.26 \pm 0.04 ^c	0.50 \pm 0.03 ^a	0.64 \pm 0.03 ^b	0.64 \pm 0.07 ^b

Values are Mean \pm standard deviation, n=5: mean across the row with different alphabetical superscript indicates a significant different (P<0.05). AST, Aspartate Aminotransferase; ALT, Alanine Transaminase; ALP, Alkaline Phosphatase. Normal control represents group I, negative control represents group II while 400, 600 and 800 mg/kg ELECR represent Groups III, IV and V respectively.

Oestrogen and prolactin are known to be the linchpin of milk production after the birth of a child. While oestrogen promotes breast tissue proliferation and growth, prolactin regulates milk production

and mammary gland growth.^{17,18} Administration of the aqueous leaf extract of *Combretum racemosum* significantly (P< 0.05) increased oestrogen levels and follicle stimulating hormone (FSH) compared to

the negative control. Treatment with the extract did not significantly alter prolactin levels (Figure 5). This suggests that ELECR can increase breast milk production. Treatment with the extract also did not adversely alter the histology of the hypothalamus and anterior pituitary (Figure 2). The fact that there was no change in uterine histomorphology in the ELECR-treated rats compared to the negative control group suggests that ELECR may also play a positive role in uterine involution and healthy weight in the ELECR-treated postpartum rats.

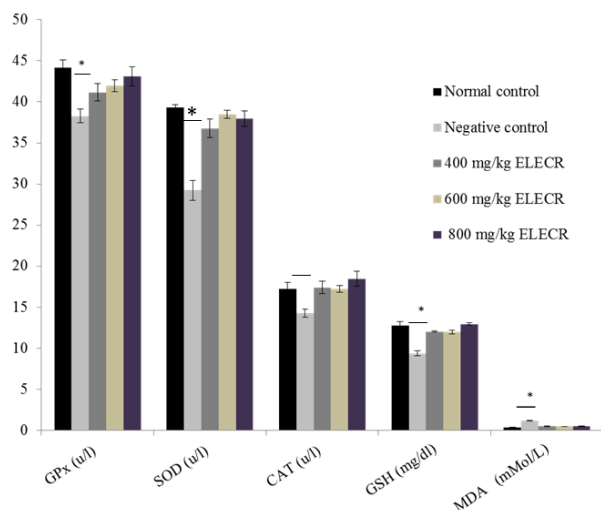


Figure 4: Effects of *Combretum racemosum* ethanol leaf extract on Serum antioxidant activities of lactating female albino wistar rats

Values are Mean \pm standard deviation, n=5. * indicates a significant different ($P < 0.05$). GPx, Glutathione Peroxidase, GSH; Glutathione, SOD; Superoxide Dismutase, CAT; Catalase, MDA; Malondialdehyde. Normal control represents group I, negative control represents group II while 400, 600 and 800 mg/kg ELECR represent Groups III, IV and V respectively.

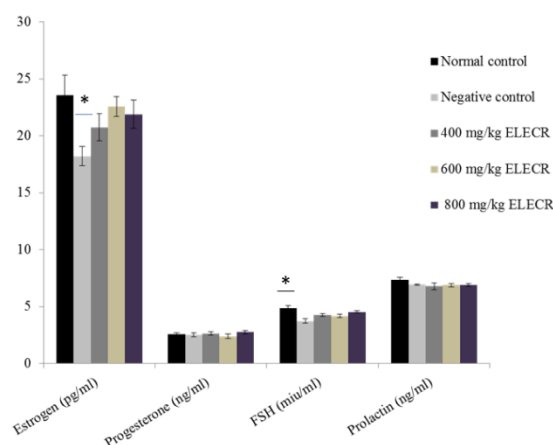


Figure 5: Effects of *Combretum racemosum* ethanol leaf extract on reproductive hormone profile of lactating female albino wistar rats

Values are Mean \pm standard deviation, n=5, * indicates a significant different ($P < 0.05$). FSH, Follicle stimulating hormone. Normal control represents group I, negative control represents group II while 400, 600 and 800 mg/kg ELECR represent Groups III, IV and V respectively.

Conclusion

This study clearly demonstrated the non-toxic and protective tendency of *Combretum racemosum* leaf extract after 14 days of treatment. Our study showed that *Combretum racemosum* ethanol leaf

extract has hepatoprotective, renoprotective, anti-hyperlipidemic and antioxidant potential and is safe for therapeutic uses. The phytochemical profile of the plant extract contains fourteen bioactive compounds with well-established pharmacological activities. The study also demonstrates that although the extract does not directly increase lactation, it may achieve this by promoting breast tissue growth and supporting milk flow by increasing estrogen level, as our results show. This study, therefore, supports the use of *Combretum racemosum* ethanol leaf extract in new mothers due to its weight-regulating and lactation-promoting effects, as well as its protection against oxidative stress and improvement of erythropoiesis. However, clinical trials are needed to investigate concerns related to postpartum obesity and to determine whether the galactagogue effect observed in experimental animals is relevant to humans after childbirth.

Conflict of Interest

The authors declare no conflicts of interest.

Authors' Declaration

The authors hereby declare that the work presented in this article is original and that any liability for claims relating to the content of this article will be borne by them

Acknowledgement

This study is supported by Tertiary Education Trust Fund Institutional Base Research (IBR) with grant number TETFund/DR&D/CE/UNI/IMO/IBR/2020/VOL.I

References

1. Esiaba RI, Nwoko JU, Ukachukwu CE, Ekweogu CN, Uche ME, Ugbogu EA. *Annona muricata* L. fruit pulp improves hormone profile and semen quality in testosterone-induced benign prostatic hyperplasia male rats. Trop J Nat Product Res. 2024; 8(11): 9131-9137. <https://doi.org/10.26538/tjnpr/v8i11.23>.
2. Uche ME, Chinyere GC, Ekweogu CN, Esiaba IR, Nwankpa P, Ugbogu EA. Analgesic, anti-inflammatory and antigastric ulcer potential of aqueous leaf extract of *Emilia sonchifolia* in rats Trop J Nat Product Res. 2024; 8(9): 8314-8320.
3. Kaur G, Kataria H, Mishra R. Medicinal plants as novel promising therapeutics for neuroprotection and neuroregeneration. In New Age Herbals; Springer: Singapore, 2018; pp. 437-453.
4. Van-Wyk A, Prinsloo G. Medicinal plant harvesting, sustainability and cultivation in South Africa. Biol Conserv. 2018; 227:335-342. doi: 10.1016/j.biocon.2018.09.018.
5. Ezekwesili-Ofili J, Okaka A. Herbal medicines in African traditional medicine. J Herbal Med. 2019; 10:191-214.
6. Parusnath M, Naidoo Y, Singh M, Kianersi F, Dewir YH. Antioxidant and antibacterial activities of the leaf and stem extracts of *Combretum molle* (R. Br. ex G. Don.) Engl. & Diels. Plants. 2023; 25; 12(9):1757. doi: 10.3390/plants12091757.
7. Ugbogu E Okoro H, Okezie E, Ugbogu O, Ekweogu C, Uche M, Dike E, Ijioma S. Phytochemical characterization, anti-diarrhoeal, analgesic, anti-inflammatory activities and toxicity profile of *Ananas comosus* (L.) Merr (pineapple) leaf in albino rats. J Ethnopharmacol. 2024; 319 (2): 117224. doi: 10.1016/j.jep.2023.117224.
8. Uche ME, Chinyere GC, Ekweogu CN, Nwankpa P, Ugbogu E. Phytochemical analysis, toxicity assessment, and wound healing properties of *Emilia sonchifolia* L. leaf extract in rats. South Afr J Bot. 2024; 172: 736-746.
9. Ekweogu CN, Akubugwo EI, Emmanuel O, Nosiri CI, Uche ME, Adurosakin OE, Ijioma SN, Ugbogu EA. Phytochemical profiling, toxicity studies, wound healing, analgesic and anti-inflammatory activities of *Musa paradisiaca* L. Musaceae (Plantain) stem extract in rats. J Ethnopharmacol. 2024; 322: 117639. doi.org/10.1016/j.jep.2023.117639.

10. Akubugwo EI, Emmanuel O, Ekweogu CN, Ugbogu OC, Onuorah T R, Egeduzu OG, Ugbogu EA. GC-MS Analysis of the phytochemical constituents, safety assessment, wound healing and anti-inflammatory activities of *Cucurbita pepo* leaf extract in rats. *Sci Pharmaceutica*, 2022; 90(4): 64. doi.org/10.3390/scipharm90040064.
11. Ukwubile C, Ikpefan E, Dibal M, Umeano V, Menkiti D, Kaosi C, Paul S, Famurewa A, Nettey H, Yerima T. Pharmacognostic profiles, evaluation of analgesic, anti-inflammatory and anticonvulsant activities of *Newbouldia laevis* (P. Beauv.) Seem. ex Bureau leaf and root extracts in Wistar rats. *J Ethnopharmacol*. 2023; 314: 116632. doi.org/10.1016/j.jep.2023.116632.
12. Mustofa Y, Purwono S, Sadewa AH, Damayanti E, Heriyanto DS. Polyherbal formula (ASILACT®) induces Milk production in lactating rats through Upregulation of α -Lactalbumin and aquaporin expression. *BMC Complement Med Therap*. 2020; 20:1-8.
13. Kalantari E, Tajvar M, Naderimagham S, Takian A. Maternal obesity management: a narrative literature review of health policies. *BMC Women's Health* 2024; 24: 520. doi.org/10.1186/s12905-024-03342-2.
14. Phukan D, Ranjan M, Dwivedi, L.K. Impact of timing of breastfeeding initiation on neonatal mortality in India. *Int Breastfeeding J*. 2018; 13: 1-10.
15. Sevrin T, Boquien CY, Gandon A, Grit I, DeCoppet P, Darmaun D. Alexandre-Gouabau, M.C. Fenugreek stimulates the expression of genes involved in milk synthesis and milk flow through modulation of insulin/GH/IGF-1 axis and oxytocin secretion. *Genes* 2020; 11(10): 1208. doi: 10.3390/genes11101208
16. Sevrin T, Alexandre-Gouabau MC, Castellano B, Aguesse A, Ouguerram K, Ngyuen P, Darmaun D, Boquien CY. Impact of Fenugreek on milk production in rodent models of lactation challenge. *Nutrients* 2019;11(11):2571. doi: 10.3390/nul1112571.
17. Gardner H, Kent JC, Lai CT, Geddes DT. Comparison of maternal milk ejection characteristics during pumping using infant-derived and 2-phase vacuum patterns. *Int Breastfeeding J*. 2019;14: 1-8.
18. Pillay J, Davis TJ. Physiology, lactation. *StatPearls [Internet]*, 2022; <https://pubmed.ncbi.nlm.nih.gov/29763156/>.
19. Saltzman W, Tardif SD, Rutherford JN. Hormones and reproductive cycles in primates. In *Hormones and reproduction of vertebrates*, Academic Press, 2011;5: 291-327.
20. Sandhi A, Lee GT, Chipojola R, Huda MH, Kuo SY. The relationship between perceived milk supply and exclusive breastfeeding during the first six months postpartum: a cross-sectional study. *Int Breastfeeding J*. 2020; 15(1): 1-11.
21. Uvnäs-Moberg K, Ekström-Bergström A, Berg M, Buckley S, Pajalic Z, Hadjigeorgiou E, Kotłowska A, Lengler, Kielbratowska B, Leon-Larios F, Magistretti CM. Maternal plasma levels of oxytocin during physiological childbirth—a systematic review with implications for uterine contractions and central actions of oxytocin. *BMC Pregnancy Childbirth*, 2019;19:1-17.
22. Mortel M, Mehta SD. Systematic review of the efficacy of herbal galactogogues. *J. Human Lactation* 2013; 29(2):154-162.
23. Stuebe AM, Grewen K, Meltzer-Brody S. Association between maternal mood and oxytocin response to breastfeeding. *J Women's Health* 2013; 22(4): 352-361.
24. Brodribb W, Academy of Breastfeeding Medicine. ABM Clinical Protocol# 9: Use of galactogogues in initiating or augmenting maternal milk production, second revision 2018. *Breastfeeding Med*. 2018; 13(5): 307-314.
25. Fungtammasan S, Phupong V. The effect of *Moringa oleifera* capsule in increasing breastmilk volume in early postpartum patients: A double-blind, randomized controlled trial. *PLoS One* 2021; 16(4): e0248950. doi: 10.1371/journal.pone.0248950.
26. Okwuosa C, Urekwe P, Nwobodo E, Chilaka K. The antiulcer activities of leaf extracts of *Combretum racemosum* (Family; Combretaceae). *J Biomed Invest*. 2006; 4: 9-14.
27. Atindehou KK, Schmid C, Brun R, Kone MW, Traore D. Antitrypanosomal and antiparasitoid activity of medicinal plants from Côte d'Ivoire. *J Ethnopharmacol*. 2004; 90(2-3): 221-227.
28. Gossan D, Magid A, Yao-Kouassi P, Josse J, Gangloff S, Morjani H, Voutquenne L. Antibacterial and cytotoxic triterpenoids from the roots of *Combretum racemosum*. *Fitoterapia* 2016; 110. 10.1016/j.fitote.2016.03.002.
29. Hamza RZ, Al-Baqami NM, Khojah E, Mansour, AM, Al-Motaani, SE, Al-Salmi FA, El-Megharbel SM. Possible antioxidant and antidiabetic effects of *Combretum molle* extract in a diabetes mellitus experimental model in male rats. *Nat Product Comm*. 2021; 16:1–10.
30. Estella OU, William AC, Patrick O, Ikenna C, Mba T, Obinna O, Ginikachukwu U. Evaluation of the analgesic and antipyretic activity of methanol extract of *Combretum bauchiense* Hutch & Dalziel (Combretaceae) leaves. *Phytomed Plus* 2022; 2:100166.
31. Oriek D, Ohaeri O, Ijeh I, Ijioma S, Achi N. Acute and sub-acute toxicity evaluation of methanolic leaf extract of *Corchorus olitorius* in experimental animal models. *Asian J Res Anim Vet Sci*. 2018; 2(4): 1-12.
32. Byers SL, Wiles MV, Dunn SL, Taft RA. Mouse estrous cycle identification tool and images. *PLoS One*. 2012;7(4): e35538. doi: 10.1371/journal.pone.0035538.
33. Akara EU, Emmanuel O, Ude VC, Uche-Ikonne C, Eke G, Ugbogu EA. *Ocimum gratissimum* leaf extract ameliorates phenylhydrazine-induced anaemia and toxicity in Wistar rats. *Drug Metab Personalized Therap*. 2021; 36(4):311-320. doi: 10.1515/dmpt-2020-0185.
34. Bain B, Bates I, Laffan MA, Lewis SM. Dacie and Lewis Practical Haematology: Twelfth Edition. 2016.
35. Kanu KC, Ijioma SN, Atiata O. Haematological, biochemical and antioxidant changes in wistar rats exposed to dichlorvos based insecticide formulation used in Southeast Nigeria. *Toxics* 2016; 4(4):28. <https://doi.org/10.3390/toxics4040028>.
36. Loha M, Mulu A, Abay SM, Ergete W, Geleta B. Acute and Subacute Toxicity of methanol extract of *Syzygium guineense* leaves on the histology of the liver and kidney and biochemical compositions of blood in rats. *Evidence-Based Complement Alternat Med*. 2019; 2019:5702159. doi:10.1155/2019/5702159.
37. Miaffo D, Wansi SL, Ntchapda F, Kamanyi A. Chronic oral safety study of the aqueous extract of *Combretum molle* twigs on biochemical, haematological and antioxidant parameters of Wistar rats. *BMC Complement Med Therap*. 2020; 5;20(1):106. doi: 10.1186/s12906-020-02896-6.
38. Chattopadhyay N, Maurya R. Herbal Medicine. Reference Module in Biomedical Sciences. 2015; <https://doi.org/10.1016/B978-0-12-801238-3.05061-3>.
39. Sparkman DO, Penton Z, Kitson FG. Gas chromatography and mass spectrometry: a practical guide. Academic Press. ISBN 978-0-08-092015-3. Environmental Toxicology. In: Philip, Wexler (Ed.), Encyclopedia of Toxicology. 22nd Edition Elsevier, 2011; pp. 210–212.
40. Ramalho, TR., Oliveira, MT., Lima, AL., Bezerra-Santos, CR. and Piuvezam, MR. (2015). Gamma-terpinene modulates acute inflammatory response in mice. *Planta Medica* 81(14): 1248–1254. doi: 10.1055/s-0035-1546169.
41. Bakun P, Czarczynska-Goslinska B, Goslinski T, Lijewski S. *In vitro* and *in vivo* biological activities of azulene derivatives with potential applications in medicine. *Med*

- Chem Res. 2021; 30(4):834-846. doi: 10.1007/s00044-021-02701-0.
42. Padma M, Sivamani G, Jayaseelan T, Sivalingam A, Sasikala P, Senthilkumar S, Mani P. Phytochemical screening and GC–MS analysis of bioactive compounds present in ethanolic leaves extract of *Silybum marianum* (L.). *J Drug Deliver Therapeutics* 2019; 9: 85-89. 10.22270/jddt.v9i1.2174.
 43. Tarmo N. Medicinal properties of terpenes found in *Cannabis sativa* and *Humulus lupulus*, *Eur J Med Chem.* 2018; 157: 198-228.
 44. Sheela D, Uthayakumari F. GC-MS analysis of bioactive constituents from coastal sand dune taxon–*Sesuvium portulacastrum* (L.). *Biosci Discover.* 2013; 4: 47-55.
 45. Chinedu E, Arome D, Ameh F. A New method for determining acute toxicity in animal models. *Int J Toxicol.* 2013; 20 (3): 224–226. doi:10.4103/09716580.121674.
 46. Mukinda JT, Syce JA. Acute and chronic toxicity of the aqueous extract of *Artemisia afra* in rodents. *J Ethnopharmacol.* 2007; 112: 138–144.
 47. Auti ST, Kulkarni, YA. Acute and 28-day repeated dose oral toxicity study of caraway oil in rats. *Drug Metab Personalized Therap.* 2019; 27; 34(3). doi: 10.1515/dmpt-2019-0011.
 48. Davis M, Arendt K, Bello N, Brown H, Briller J, Epps K, Hollier L, Langen E, Park K, Walsh M, Williams D, Wood M, Silversides C, Lindley K. Team-based care of women with cardiovascular disease from pre-conception through pregnancy and postpartum: JACC Focus Seminar 1/5. *J Am Coll Cardiol.* 2021; 77(14): 1763-1777.
 49. Saheed S, Hendrik O, Ashafa O. Zea mays, Stigma maydis prevents and extenuates acetaminophen-perturbed oxidative onslaughts in rat hepatocytes. *Pharmaceut Biol.* 2016; 54 (11): 2664–2673.
 50. Okwuosa C, Achukwu O, Azubuike N, Abah E. Protective effect of the leaf extracts of *Combretum Racemosum* P. Beauv (Combretaceae) on cyclophosphamide induced pancytopenia and liver injury in male rats. *Res J Pharmacol.* 2012; 6: 30-34. 10.3923/rjpharm.2012.30.34.
 51. Nguenang GS, Ntyam ASM, Kuete V. Acute and subacute toxicity profiles of the methanol extract of *Lycopersicon esculentum* L. leaves (tomato), a botanical with promising in vitro anticancer potential. *Evidence-Based Complement Alternat Med.* 2020:8935897. doi: 10.1155/2020/8935897.
 52. Gounden V, Bhatt H, Jialal I. Renal Function Tests. [Updated 2023 Jul 17]. *Stat Pearls.* StatPearls Publishing, Treasure Island (FL), 2018 2023 Jan-. Available from: <https://www.ncbi.nlm.nih.gov/books/NBK507821/>.
 53. Masoko P, Picard J, Eloff J. Antifungal activities of six south African *Terminalia* species (Combretaceae) *J Ethnopharmacol.* 2005; 99:301–308. doi: 10.1016/j.jep.2005.01.061.
 54. Gruz J, Ayaz FA, Torun H, Strnad M. Phenolic acid content and radical scavenging activity of extracts from medlar (*Mespilus germanica* L.) fruit at different stages of ripening. *Food Chem.* 2011; 124:271–277.
 55. Muhtadi M, Wiyono AAF. Testing antioxidant activity of *Plumeria alba* and *Plumeria rubra* ethanolic extracts using DPPH and Frap methods and determining their total flavonoid and phenolic levels. *J Nutra Herbal Med.* 2020; 3:38–50.
 56. Palipoch S. A review of oxidative stress in acute kidney injury: Protective role of medicinal plants-derived antioxidants. *Afr J Trad Complement Alternat Med.* 2013; 10:88–93. doi: 10.4314/ajtcam.v10i4.15.
 57. Okereke G, Emmanuel O, Ude VC, Ekweogu CN, Ikpeazu VO, Ugbogu, EA. Physicochemical characteristics, acute and subacute toxicity of cashew nut shell oil in Wistar rats. *Sci Afr.* 2020; 8: e00391. doi.org/10.1016/j.sciaf.2020.e00391.
 58. Koevi KA, Millogo V, Fokou JBH, Sarr A, Ouedraogo GA, Bassene E. Phytochemical analysis and antioxidant activities of *Combretum molle* and *Pericopsis laxiflora*. *Int J Biol Chem Sci.* 2015; 9:2423–2431. doi:10.4314/ijbcs.v9i5.14.
 59. Rajalingam D, Varadharajan R, Palani S. Evaluation of hepatoprotective and antioxidant effect of *Combretum albidum* G. don against CCl₄ induced hepatotoxicity in rats. *Int J Pharm Pharmaceut Sci.* 2016; 8:218–223. doi:10.22159/ijpps.2016.v8i9.13136.
 60. Babatunde S, Moyinoluwa O, Oluwatosin A, Eigege W, Shreyans J. Bioguided isolation of an antioxidant compound from *Combretum racemosum* P. Beauv leaf. *Int J Biol Chem Sci.* 2014; 8:2339–2346.
 61. Bhuiya NMA. Investigation on antioxidant and antimicrobial properties of methanolic extract of *Combretum indicum* leaf. *Int J Green Pharm.* 2020; 14:169–174.